



Collington, a Kendal Affiliate 2030 Project Mitchellville, MD

Wagman is proud to be providing comprehensive preconstruction services for Collington - A Kendal Affiliate, a premier senior living community located in Mitchellville, MD. As part of Collington's 2030 initiative, this multi-phase project represents a significant investment in the future of the campus and the long term experience of its residents.

The scope of the project includes 55 new independent living residences, comprised of 13 cottages, 8 villas, and 34 apartments, as well as the replacement of assisted living and memory care with new household models of care. The plan also introduces a new Main Street concept along with enhanced internal and external commons designed to strengthen connectivity and community life across the campus.

Through preconstruction, Wagman has worked closely with SFCS Architects and Civil Engineering firm MHG, ownership, and owner representatives through weekly coordination meetings focused on cost modeling, constructability, phasing, and schedule alignment. These efforts are guiding the project toward a targeted construction start in early 2027.

In parallel, Wagman continues to actively engage the Collington community. Wagman has participated in meetings with residents and the Board of Directors to share updates, explain the preconstruction process, and answer questions, ensuring transparency and trust at every stage.

Through collaborative leadership and thoughtful planning, Wagman is helping lay the groundwork for a successful and transformative project at Collington.

A Message from Our President

We've recently caught glimpses of warmer weather as spring arrives, a welcome change after the extremely challenging winter season we endured.

With the new season comes renewed energy and enthusiasm for what promises to be a very active remainder of the year. Our teams are preparing to kick off new projects at Stevenson University, Cleveland Brothers Equipment Company, GEA North America, Scouting America, and the Collington-Kendal Community. We are also proud to continue building strong relationships with our repeat clients through ongoing projects for the Appell Center for the Performing Arts, Penn State University, Gettysburg College, Presbyterian Senior Living, M&T Bank, Asbury Communities, Fulton Bank, Pennsylvania American Water, and UPMC Primary Care Rodney Road.

In addition, we recently completed several impactful projects, including WellSpan Shrewsbury Hospital; the Spring Grove Branch for the YMCA of the Roses; the Center for Education, Business, and the Arts in Shenandoah, PA; renovations to Merritt Hall at McDaniel College; and renovations to the York County Food Bank.

At Wagman Construction, we remain committed to delivering not only quality projects, but a quality experience for both new and long-standing clients. We are honored to once again be nationally recognized in 2026 by Associated Builders and Contractors (ABC) with the prestigious Top Performers designation, acknowledging our ongoing achievements in safety, quality, diversity, and project excellence.

None of this would be possible without the trust of our tremendous clients and the dedication of our industry partners. Together, we continue to deliver award-winning, best-in-class projects in the communities where we live, work, and play. Thank you!

- Jan Wagner, President of Wagman Construction, Inc.



Special Projects Group

Our Special Projects Group is agile, flexible, and client-centered, delivering tailored service on even the smallest project.

PROJECT TYPES

- Apartment and Cottage Turnarounds
- Code Compliance Upgrades
- Consultation
- Exterior Building and Site Modifications
- Facility Maintenance and Modifications
- Interior Building Fit-outs
- Interior Building Modifications
- Renovations

[LEARN MORE](#)

**YOUR INDUSTRY,
OUR EXPERTISE**

Let's talk about your next project! Contact Kevin Hubbell to see how our Special Projects Group can help.

717.676.8802 | kphubbell@wagman.com

PROJECT UPDATE

York County SPCA Dog Run



York, PA | Wagman's Special Projects Group partnered with the York County SPCA to deliver a new dog run through a collaborative design-build approach. Starting with a rough concept, our team worked closely with the SPCA, local township officials, and the design team to navigate zoning challenges, site conditions, and utility extensions. Wagman self-performed the shade structure and seating, completing the project at cost with all services donated, reinforcing our commitment to supporting mission-driven organizations and giving back to the communities we serve.

COMMUNITY: A CORE VALUE AT WAGMAN

Wagman's Annual Give Local York "Fun"draiser

Community is at the heart of everything we do. This April, teams from Wagman's Corporate office competed in Egglympics 2026, which raised money for nonprofits participating in Give Local York.

The event featured a series of lighthearted challenges including an egg scramble, egg races, an egg toss and an egg roulette. Each team selected a benefiting nonprofit and the top fundraisers in each team competed in the events. The winners earned additional prize money for their nonprofits, which included Lifepath Christian Ministries, York County SPCA, Sweet Grace Ministries, Keystone Family Alliance, and the Women's Care Center of York.

With the donations and additional earnings to winning teams, \$3,800 was raised! We are grateful to everyone who participated and supported these efforts, and to the local nonprofits whose work continues to inspire us.



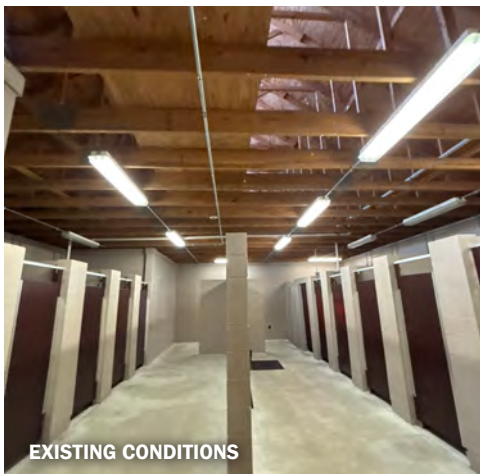
GIVE LOCAL YORK
April 30 & May 1

PROJECT UPDATE

Scouting America | Camp Tuckahoe

Dillsburg, PA | Wagman Construction is renovating the existing shower facilities at Camp Tuckahoe in Dillsburg, PA, for Scouting America, New Birth of Freedom Council, as part of a Pennsylvania Local Share Account (LSA) grant-funded improvement project. The work is being completed in an unoccupied seasonal camp environment and will focus on improving safety, durability, and overall functionality of the facilities for ongoing camp use. The scope includes selective demolition and removal of existing shower components, plumbing repairs and upgrades, installation of new shower fixtures, partitions, and accessories, and the application of wall and floor finishes suitable for wet environments. The project also incorporates code-compliant drainage and ventilation improvements, followed by final cleanup and proper disposal of debris.

Construction is underway and will be completed by early June 2026 to meet camp operational requirements.



PROJECT UPDATE

McDaniel College | Merritt Hall Renovations

Westminster, MD | Wagman Construction recently completed renovations to the second and third floors of Merritt Hall at McDaniel College in Westminster, MD. The 20,000 SF project modernized academic spaces supporting the college's Speech-Language Pathology, Occupational Therapy, and Early Childhood Education programs.

The scope included selective demolition and reconfiguration of existing offices, classrooms, and laboratory spaces to create a more functional, hands-on learning environment. New construction featured updated offices, treatment rooms, laboratories, and a simulation apartment, along with unique elements such as a climbing wall and a dedicated yoga room with ceiling-mounted swings. Upgrades to flooring and mechanical, electrical, and plumbing systems were also completed to support the new layout.

Construction was carefully phased and coordinated while portions of the building remained occupied. Located in a central area of campus, the project required remote staging and close coordination to minimize disruption to daily campus operations.



Wagman Recognized Through Top Project Awards



Wagman Construction is excited to share that three recent projects were recognized in the Central Penn Business Journal's 2026 Top Projects Awards, honoring excellence in planning, execution, and community impact across Central Pennsylvania.

Award-winning projects include:

- **Children's Aid Society Werner Early Learning Childcare Center**, a newly constructed facility supporting children and families in York County
- **Wagman's Corporate Headquarters**, a modern office building that improves operations, collaboration for our people, and better serves our clients
- **York Academy Regional Charter School Upper School – Legacy Hall**, an interior transformation designed to enhance learning environments and student engagement

This recognition reflects the strength of our partnerships and the dedication of our teams. We're grateful to our clients, design partners, and trade partners for their trust and collaboration, and proud to deliver projects that create lasting value for the communities we serve. [Read the full press release here.](#)